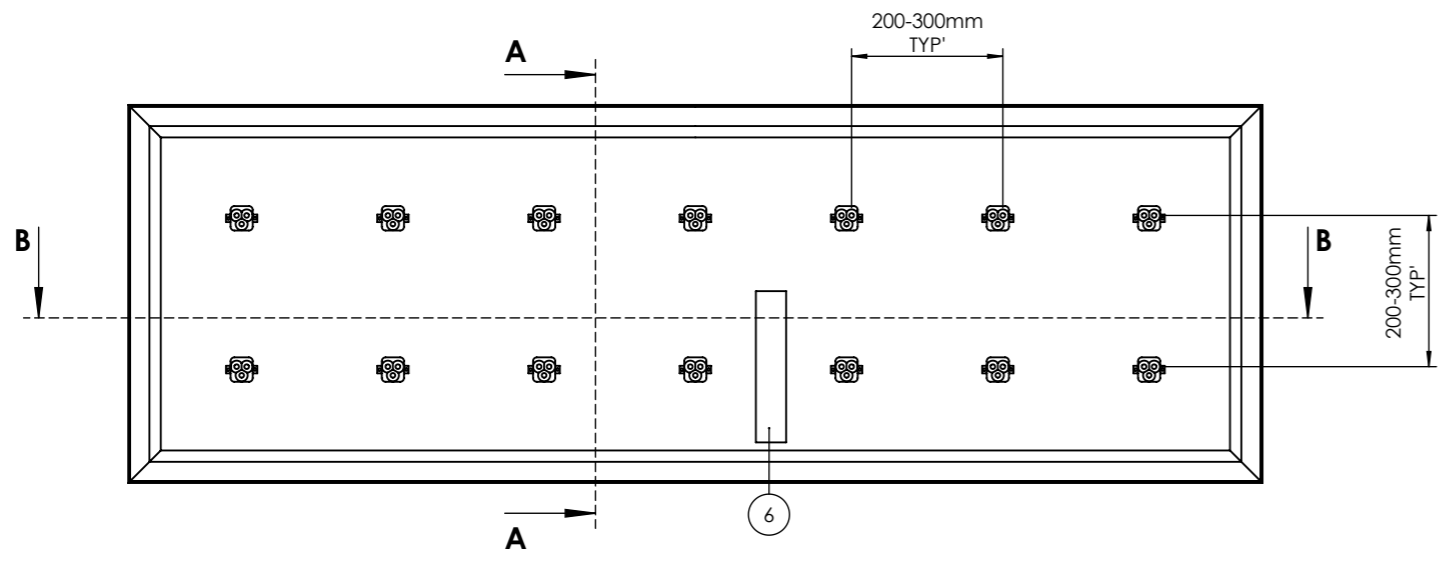
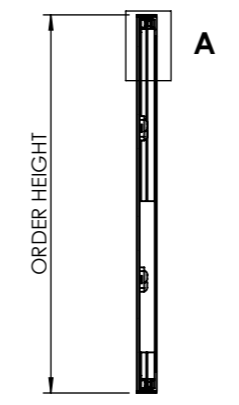


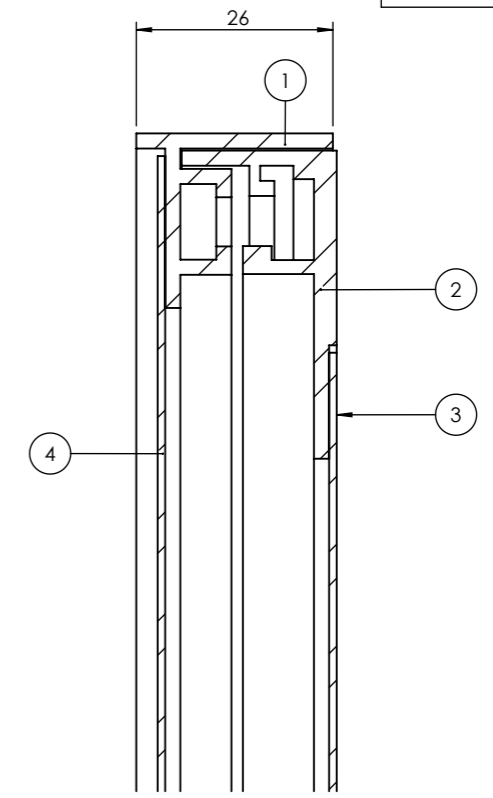
DO NOT SCALE
IF IN DOUBT ASK



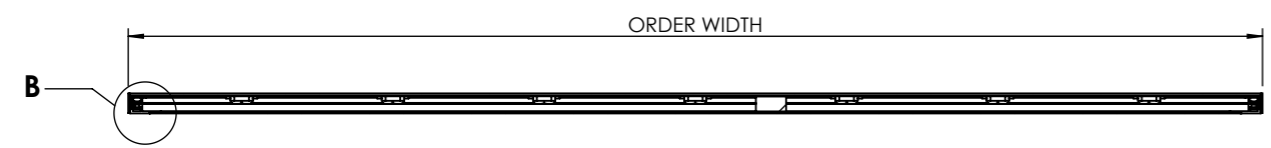
FRONT VIEW
(FACE MATERIAL REMOVED FOR CLARITY)
SCALE 1:10



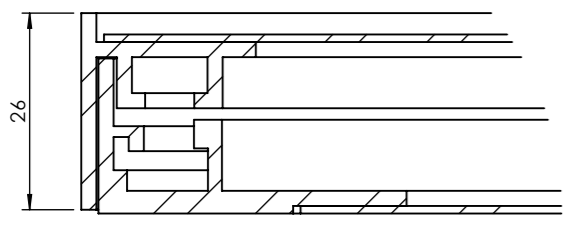
SECTION A-A



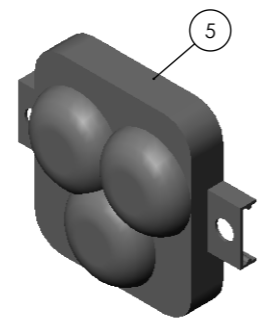
DETAIL A
SCALE 1 : 1



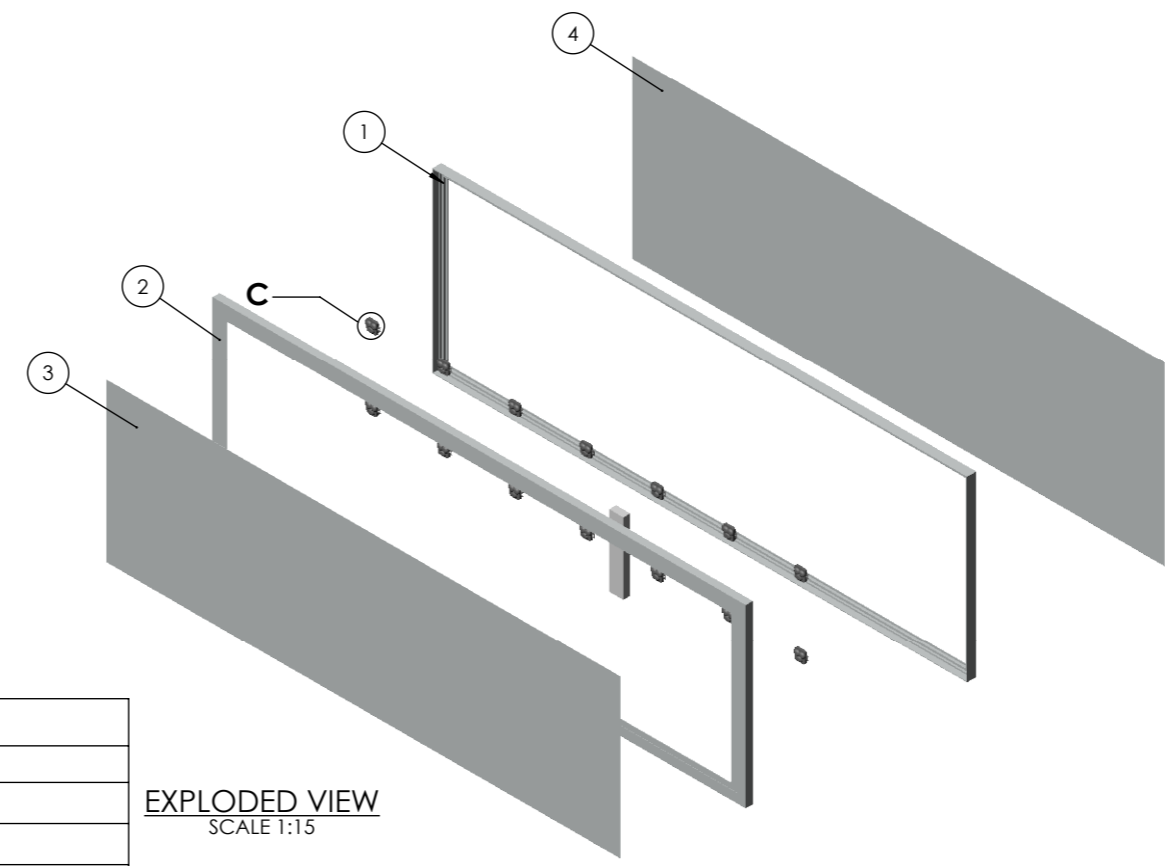
SECTION B-B



DETAIL B
SCALE 1 : 1



DETAIL C
SCALE 1 : 1



EXPLODED VIEW
SCALE 1:15

REV.	DATE	DESCRIPTION	BY

THIS DRAWING IS THE PROPERTY OF KSUK LTD AND MAY NOT BE COPIED IN WHOLE OR IN PART OR USED FOR ANY OTHER PURPOSE THAN THAT FOR WHICH IT IS SUPPLIED

GENERAL TOLERANCES UNLESS OTHERWISE STATED
0 DECIMAL PLACES +/- 1mm
1 DECIMAL PLACE +/- 0.5mm
2 DECIMAL PLACES +/- 0.15mm
ANGULAR DIMENSIONS +/- 1/2°

BILL OF MATERIALS SLIMCASE 26				
ITEM NO.	DRAWING No/REF	QTY	FINISH	NOTES
1	SLIMCASE 26 REAR FRAME	1		
2	SLIMCASE 26 FRONT FRAME	1		
3	FRONT FASCIA	1		
4	BLANKING PLATE	1		1-3mm THICKNESS RANGE
5	LED MODULE ASSEMBLY	AS REQ'		200-300mm GRID FORMATION
6	LED CONVERTER	1		

KSUK[®]

T 0121 783 0779, F 0121 783 1334
KSUK, Unit 6 Valepits Road, Garrets Green Industrial Estate, Birmingham, West Midlands, B33 0TD

DRAWING TITLE: SLIMCASE 26		
PRODUCT RANGE: SLIMCASE		
PROJECT No: IDS-236	DATE: 21-03-19	
PAPER: A3	DRAWN: R.L	CHKD: -
SCALE: N.T.S	DWG No.: IDS-236-011	REV: -