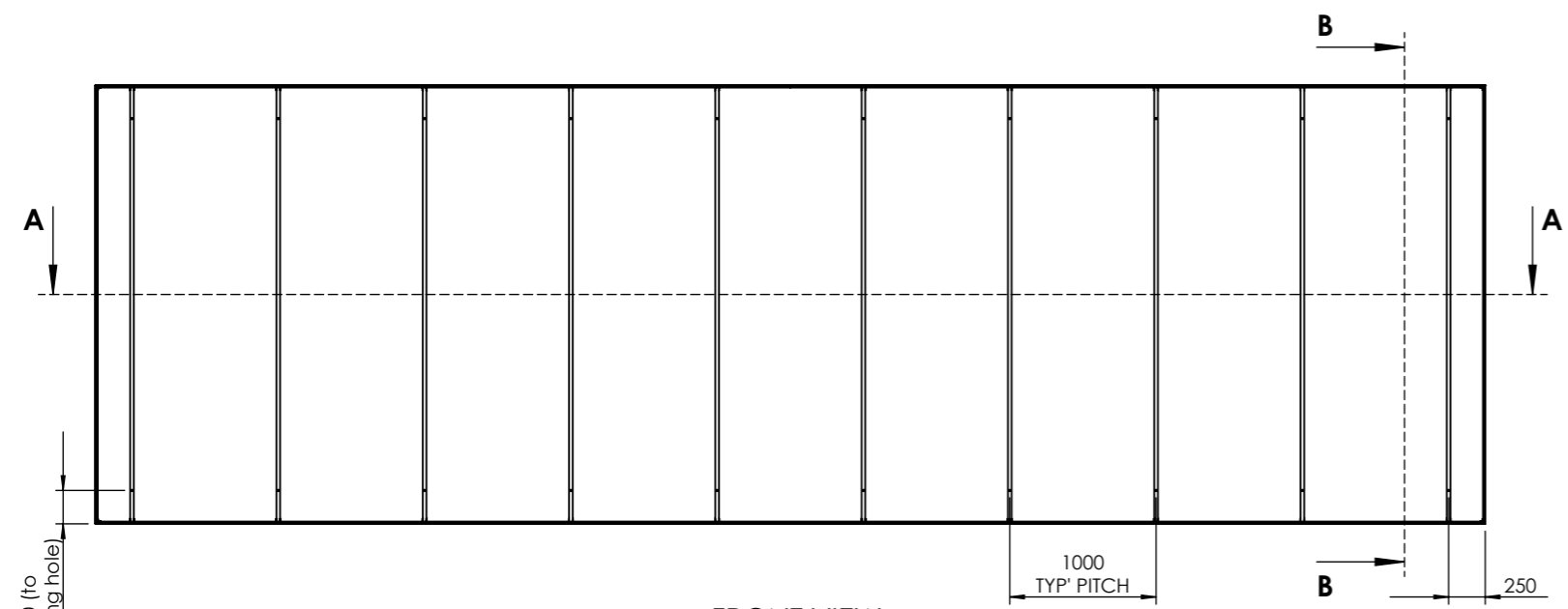
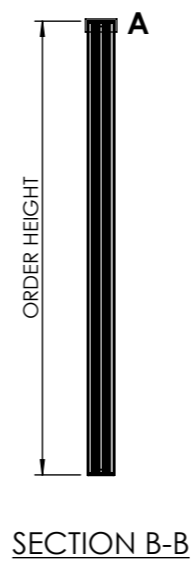


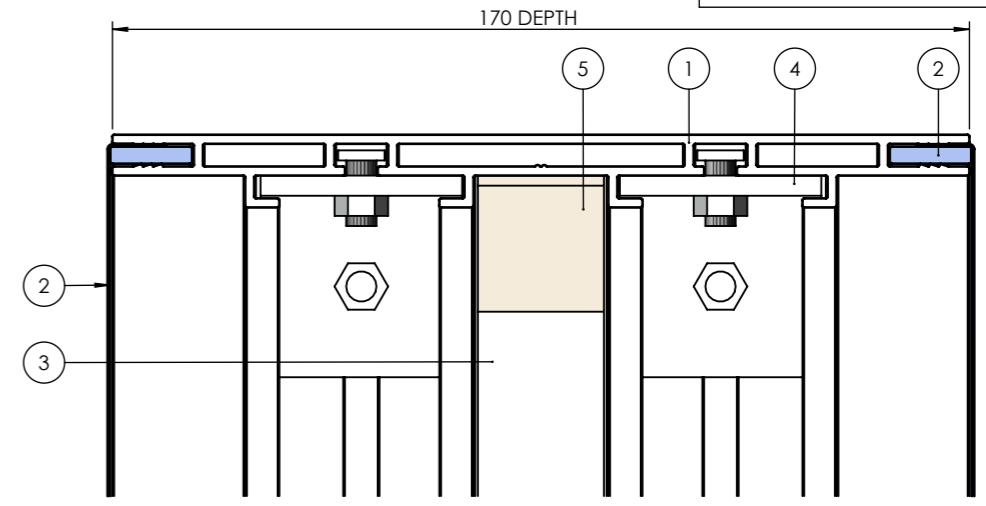
DO NOT SCALE
IF IN DOUBT ASK



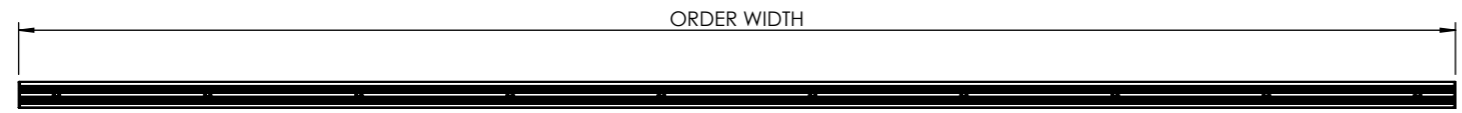
FRONT VIEW
(FACE MATERIAL REMOVED FOR CLARITY)
SCALE 1:50



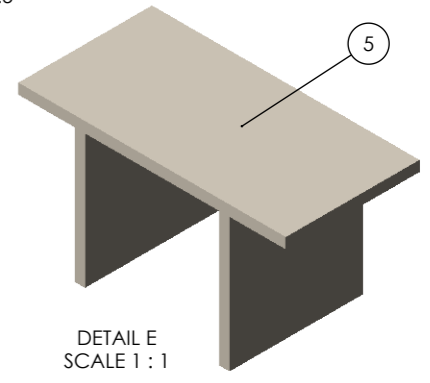
SECTION B-B



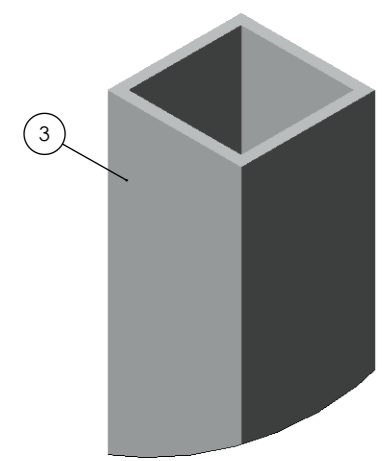
DETAIL A
SCALE 1:1.5



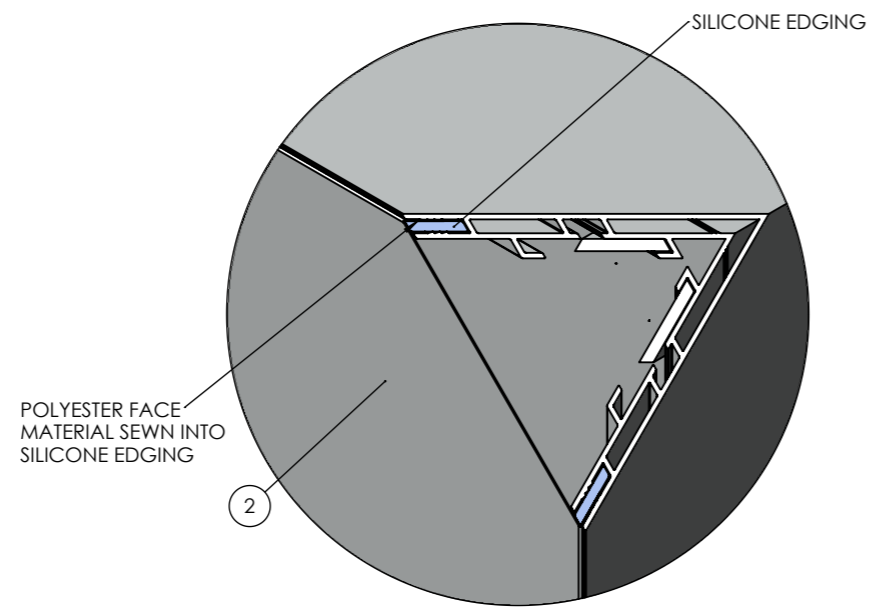
SECTION A-A



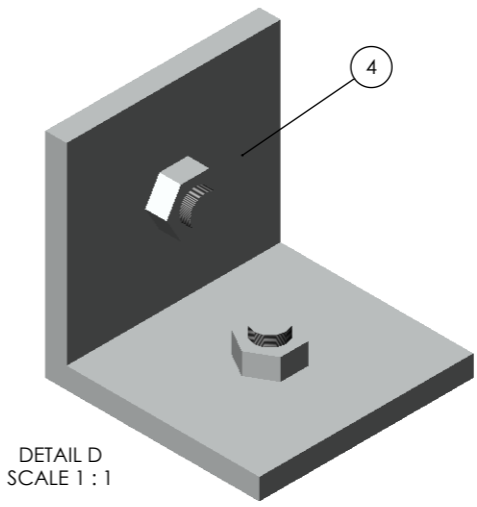
DETAIL E
SCALE 1:1



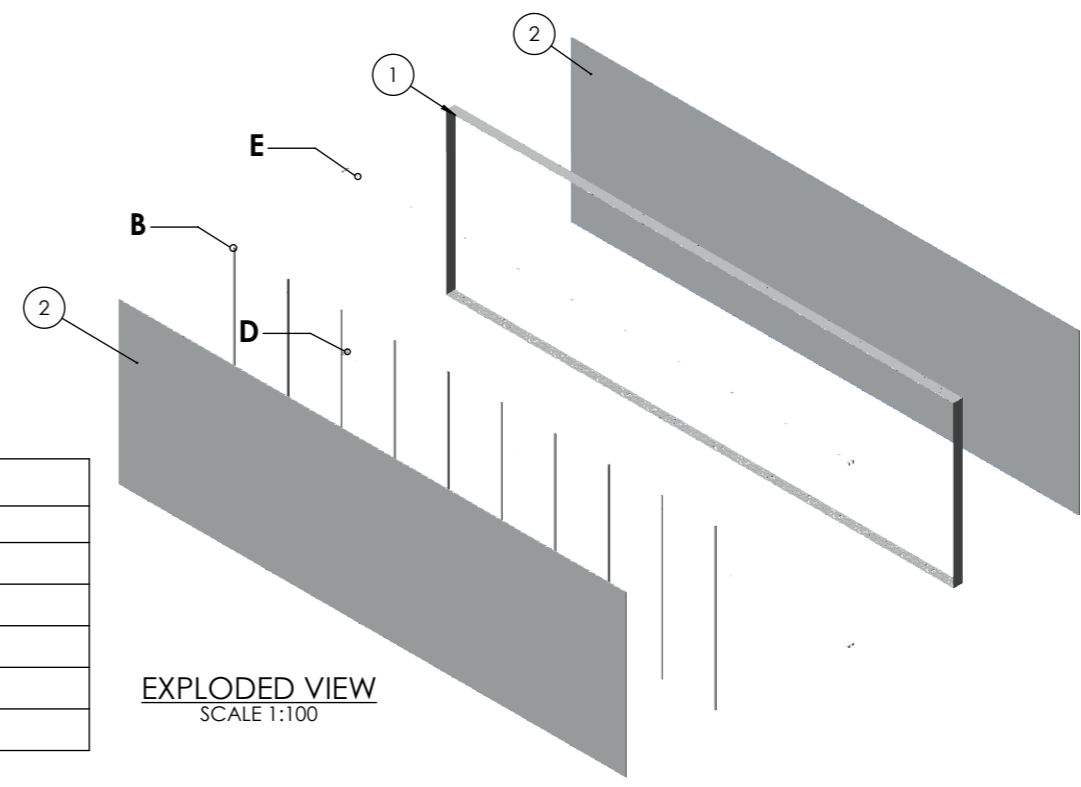
DETAIL B
SCALE 1:1



DETAIL C
SCALE 1:2



DETAIL D
SCALE 1:1



EXPLODED VIEW
SCALE 1:100

BILL OF MATERIALS TEXFLEX 170

ITEM NO.	DRAWING No/REF	QTY	FINISH	NOTES
1	TEXFLEX 170 PROFILE	1		
2	SILICONE KEDER WITH POLYESTER FACE	2		
3	TEXFLEX 170 WALL SUPPORT	AS REQ'		1000mm PITCH TYPICALLY
4	CORNER CONNECTOR	8		
5	HOLDER	AS REQ'		2 No PER WALL SUPPORT TYPICALLY

REV.	DATE	DESCRIPTION	BY

THIS DRAWING IS THE PROPERTY OF KSUK LTD AND MAY NOT BE COPIED IN WHOLE OR IN PART OR USED FOR ANY OTHER PURPOSE THAN THAT FOR WHICH IT IS SUPPLIED

GENERAL TOLERANCES UNLESS OTHERWISE STATED
 0 DECIMAL PLACES +/- 1mm
 1 DECIMAL PLACE +/- 0.5mm
 2 DECIMAL PLACES +/- 0.15mm
 ANGULAR DIMENSIONS +/- 1/2°

KSUK[®]

T 0121 783 0779, F 0121 783 1334
 KSUK, Unit 6 Valepits Road, Garrets Green Industrial Estate, Birmingham, West Midlands, B33 0TD

DRAWING TITLE: TEXFLEX 170	
PRODUCT RANGE: TEXFLEX	
PROJECT No: IDS-236	DATE: 05-03-19
PAPER: A3	DRAWN: R.L
SCALE: N.T.S	CHKD: -
DWG No.: IDS-236-025	REV: -