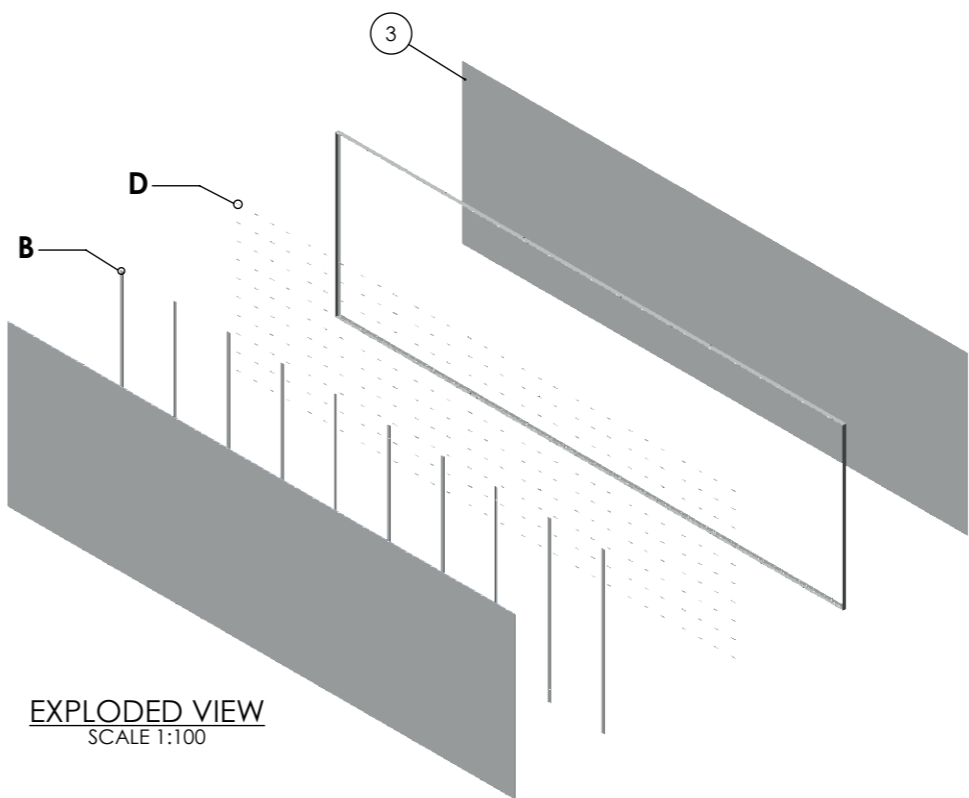
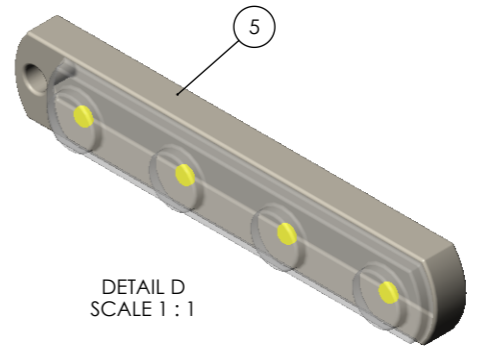
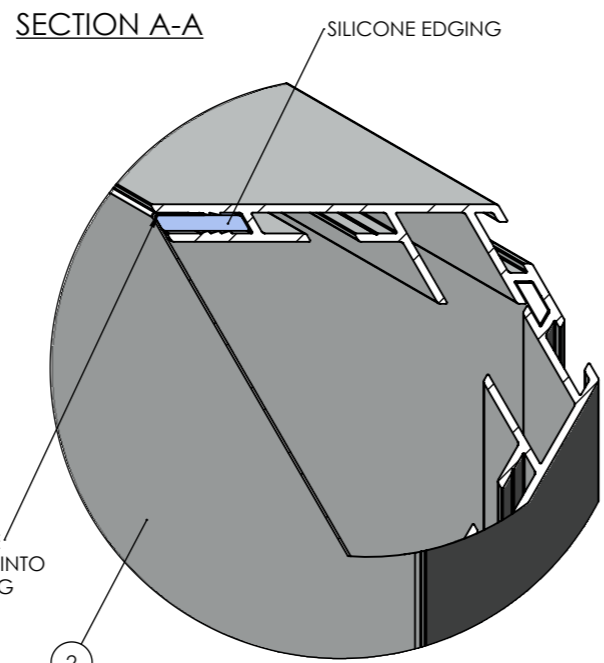
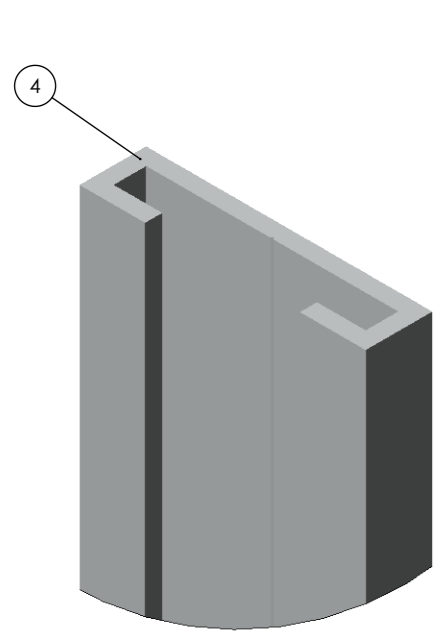
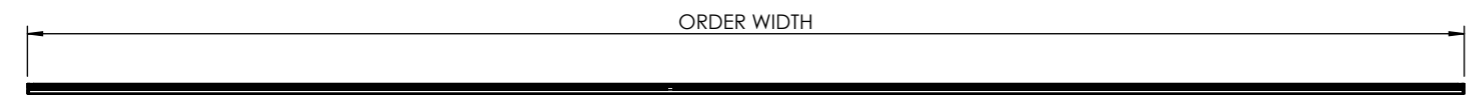
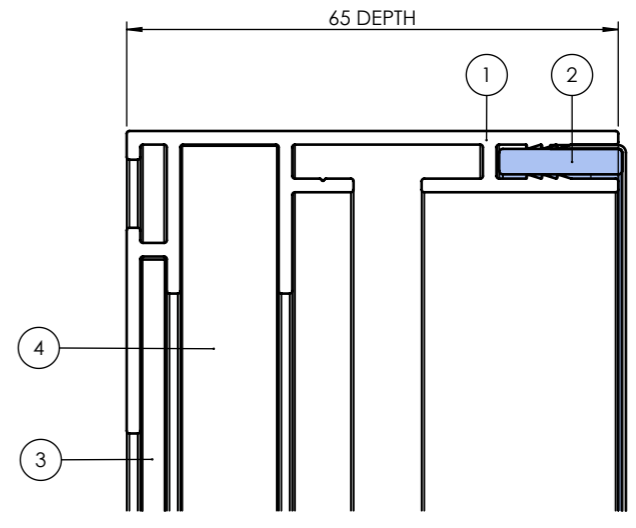
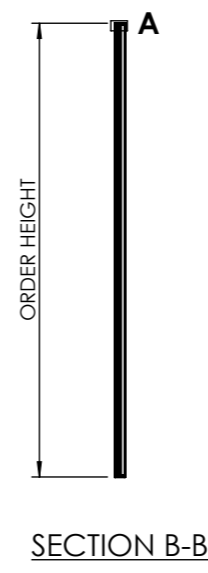
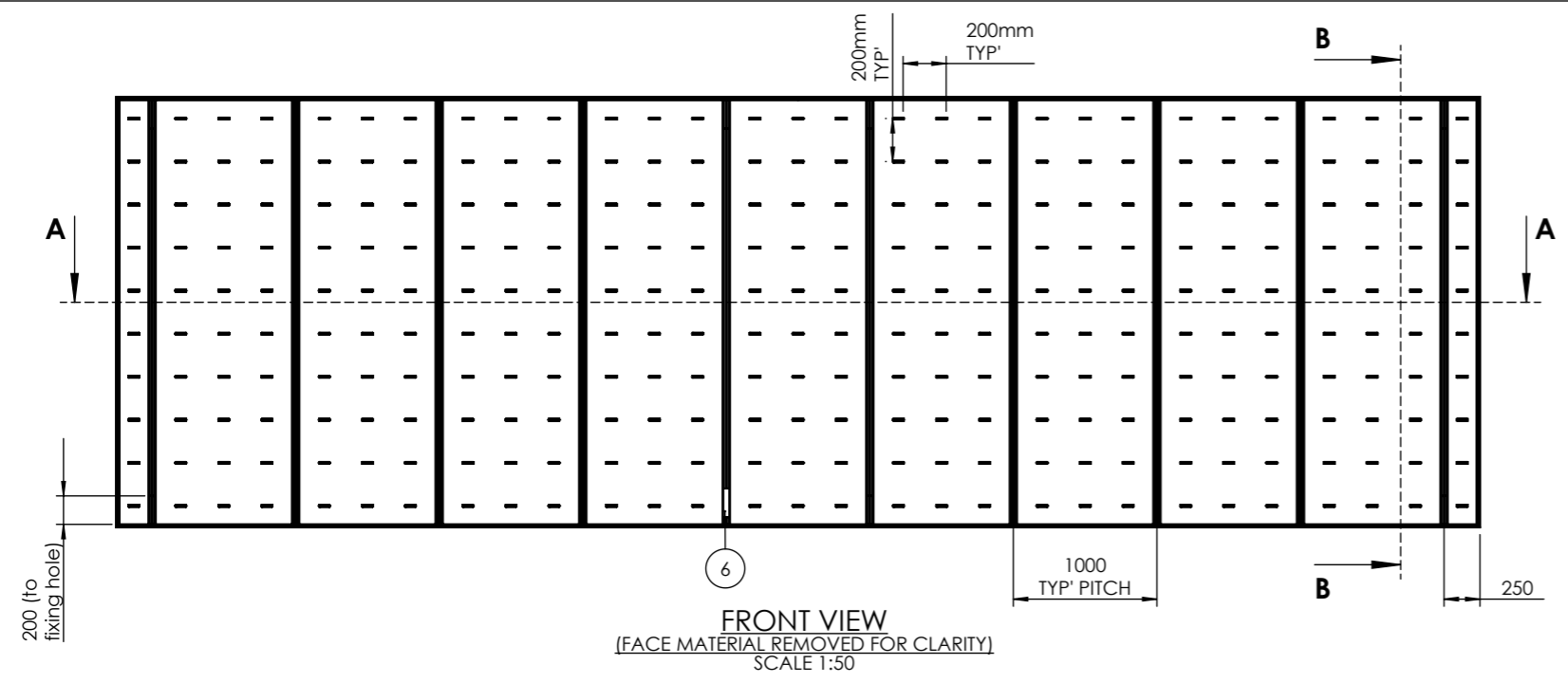


DO NOT SCALE
IF IN DOUBT ASK



BILL OF MATERIALS TEXFLEX 65				
ITEM NO.	DRAWING No/REF	QTY	FINISH	NOTES
1	TEXFLEX 65 PROFILE	1		
2	SILICONE KEDER WITH POLYESTER FACE	1		
3	BACKING	1		1-3mm THICKNESS RANGE
4	TEXFLEX 65 WALL SUPPORT	AS REQ'		1000mm PITCH TYPICALLY
5	GE MODULE	AS REQ'		200mm GRID FORMATION
6	LED CONVERTER	1		

REV. DATE	DESCRIPTION	BY
A 04-02-19	SILICONE PROFILE AMENDED	R.L
<small>THIS DRAWING IS THE PROPERTY OF KSUK LTD AND MAY NOT BE REPRODUCED OR TRANSMITTED IN ANY FORM OR BY ANY MEANS, ELECTRONIC OR MECHANICAL, INCLUDING PHOTOCOPYING, RECORDING, OR BY ANY INFORMATION STORAGE AND RETRIEVAL SYSTEM, WITHOUT THE EXPRESS WRITTEN CONSENT OF THE COMPANY. ANY UNAUTHORIZED USE OF THIS DRAWING FOR ANY OTHER PURPOSE THAN THAT FOR WHICH IT IS SUPPLIED IS PROHIBITED.</small>		
<small>GENERAL TOLERANCES UNLESS OTHERWISE STATED: 0 DECIMAL PLACES +/- 1mm 1 DECIMAL PLACE +/- 0.5mm 2 DECIMAL PLACES +/- 0.15mm ANGULAR DIMENSIONS +/- 1/2°</small>		

KSUK[®]

T 0121 783 0779, F 0121 783 1334

KSUK, Unit 6 Valepits Road, Garrets Green Industrial Estate, Birmingham, West Midlands, B33 0TD

DRAWING TITLE: **TEXFLEX 65**

PRODUCT RANGE: **TEXFLEX**

PROJECT No: **IDS-236** DATE: **01-02-19**

PAPER: **A3** DRAWN: **R.L** CHKD: **-**

SCALE: **N.T.S** DWG No.: **IDS-236-021** REV: **A**