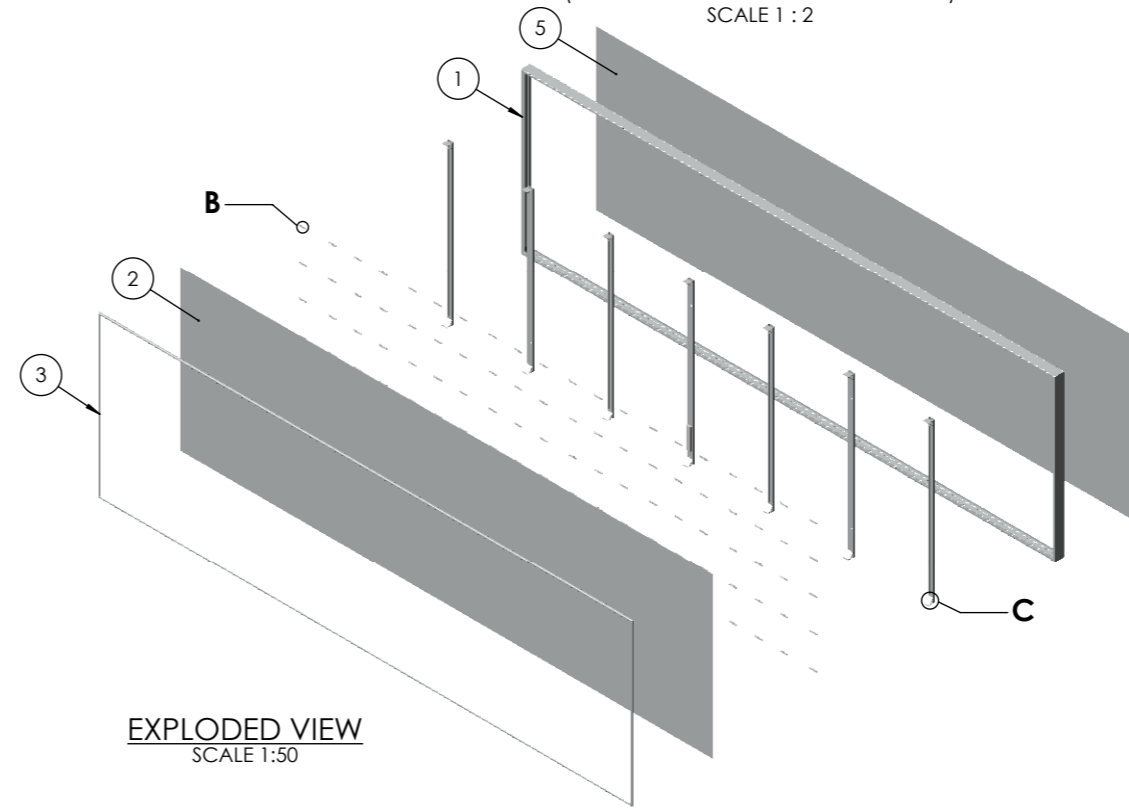
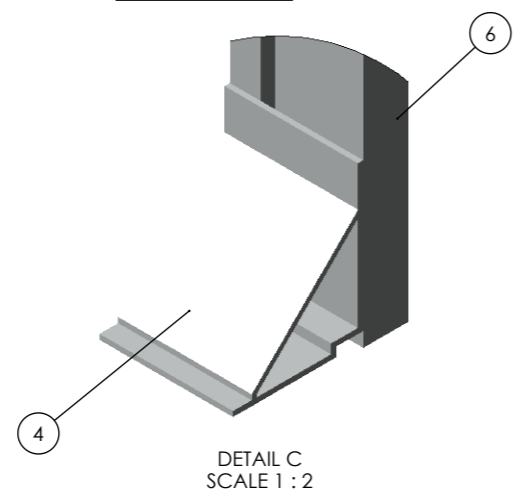
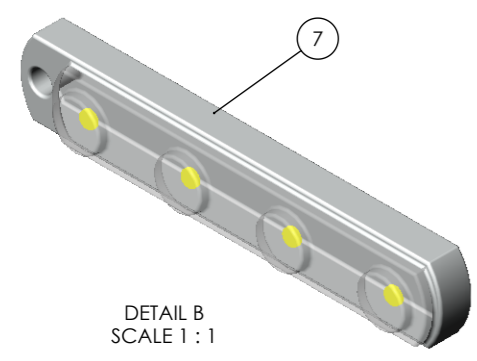
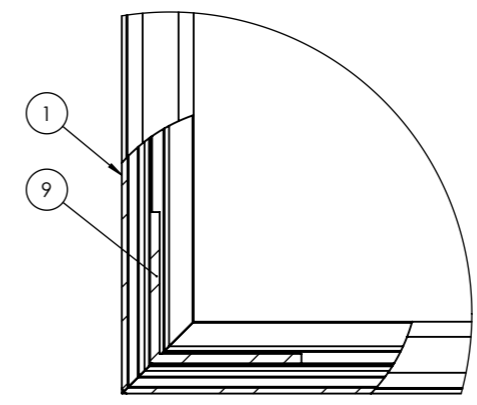
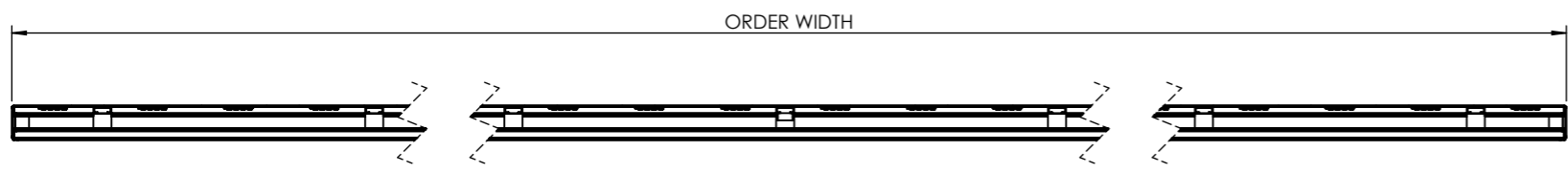
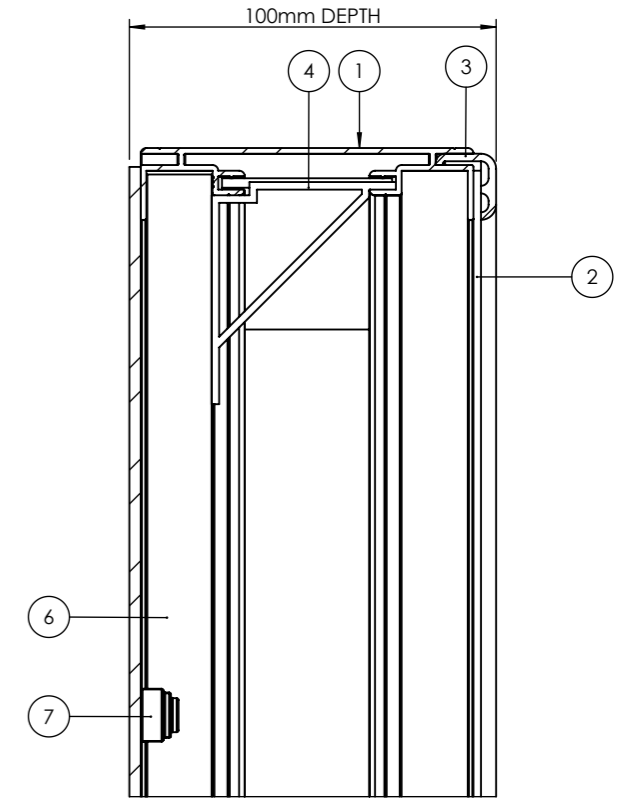
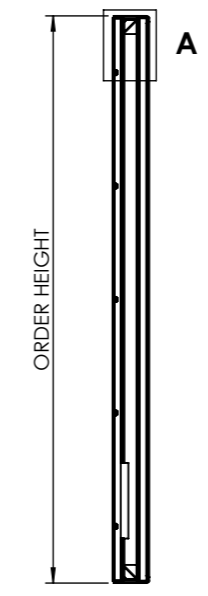
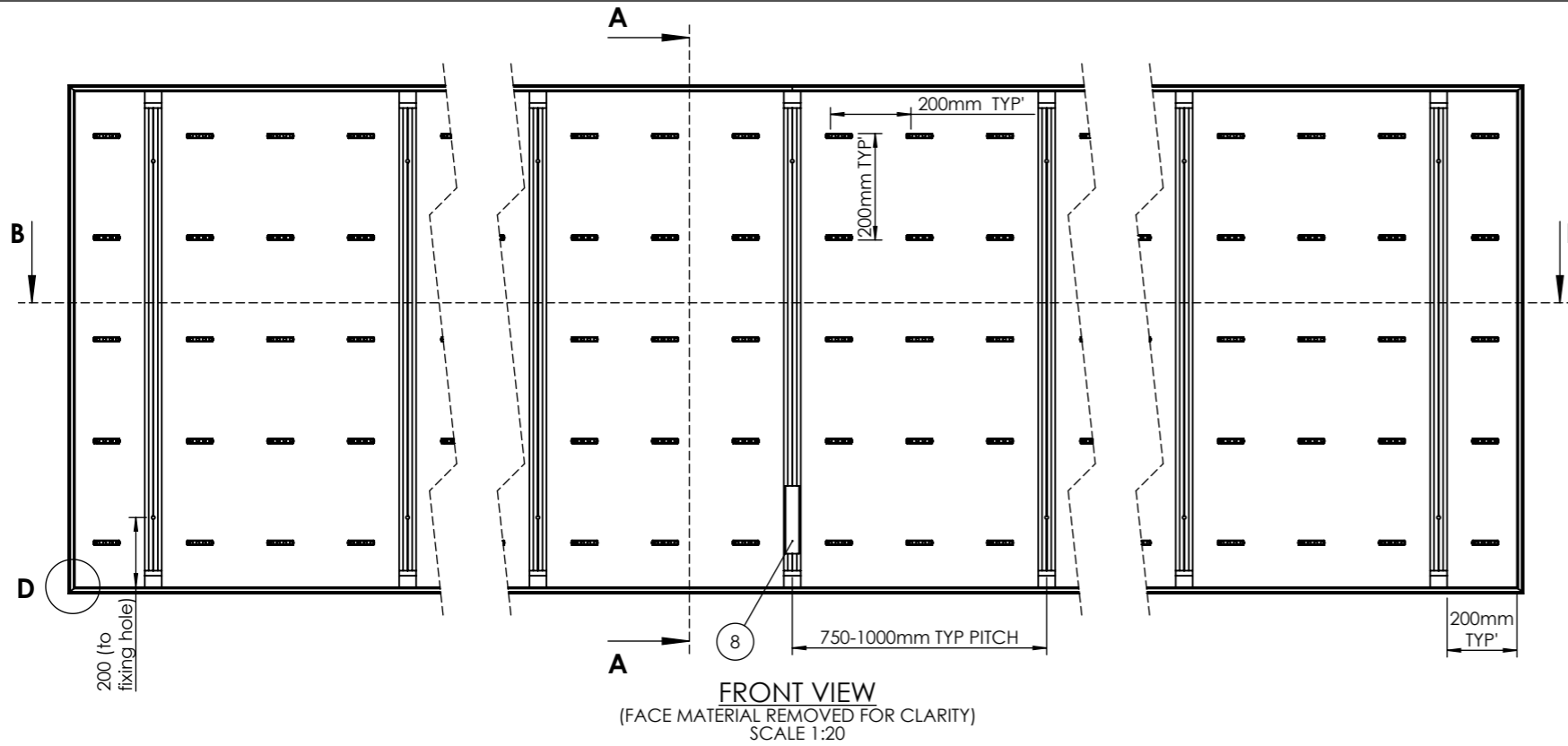


DO NOT SCALE
IF IN DOUBT ASK



BILL OF MATERIALS SIGNCASE 100

ITEM NO.	DRAWING No/REF	QTY	FINISH	NOTES
1	SIGNCASE 100 FRAME	1		
2	ACRYLIC SHEET	1		3-5mm THICKNESS RANGE
3	SIGNCASE 100 BEAD	1		
4	OPTIONAL BRACE REF TBC	AS REQ'		
5	BACKPLATE	1		1-3mm THICKNESS RANGE
6	WALL BAR REF TBC	AS REQ'		750-1000mm PITCH TYPICALLY
7	LED MODULE ASSEMBLY	AS REQ'		200mm GRID FORMATION
8	LED CONVERTER	1		
9	CORNER ANGLE	4		

REV. DATE	DESCRIPTION	BY
A 19-12-18	CORNER ANGLES ADDED, BOM NOTES UPDATED	R.L
<p>THIS DRAWING IS THE PROPERTY OF KSUK LTD AND MAY NOT BE REPRODUCED OR TRANSMITTED IN ANY FORM OR BY ANY MEANS, ELECTRONIC OR MECHANICAL, INCLUDING PHOTOCOPYING, RECORDING, OR BY ANY INFORMATION STORAGE AND RETRIEVAL SYSTEM, WITHOUT THE EXPRESS WRITTEN CONSENT OF THE COMPANY. ANY UNAUTHORIZED USE OF THIS DRAWING FOR ANY OTHER PURPOSE THAN THAT FOR WHICH IT IS SUPPLIED IS PROHIBITED.</p>		
<p>GENERAL TOLERANCES UNLESS OTHERWISE STATED: 0 DECIMAL PLACES +/- 1mm 1 DECIMAL PLACE +/- 0.5mm 2 DECIMAL PLACES +/- 0.15mm ANGULAR DIMENSIONS +/- 1/2°</p>		
<h1>KSUK[®]</h1> <p>T 0121 783 0779, F 0121 783 1334 KSUK, Unit 6 Valepits Road, Garrets Green Industrial Estate, Birmingham, West Midlands, B33 0TD</p>		
DRAWING TITLE: SIGNCASE 100		
PRODUCT RANGE: SIGNCASE		
PROJECT No: IDS-236	DATE: 11-12-18	
PAPER: A3	DRAWN: R.L	CHKD: -
SCALE: N.T.S	DWG No.: IDS-236-006	REV: A