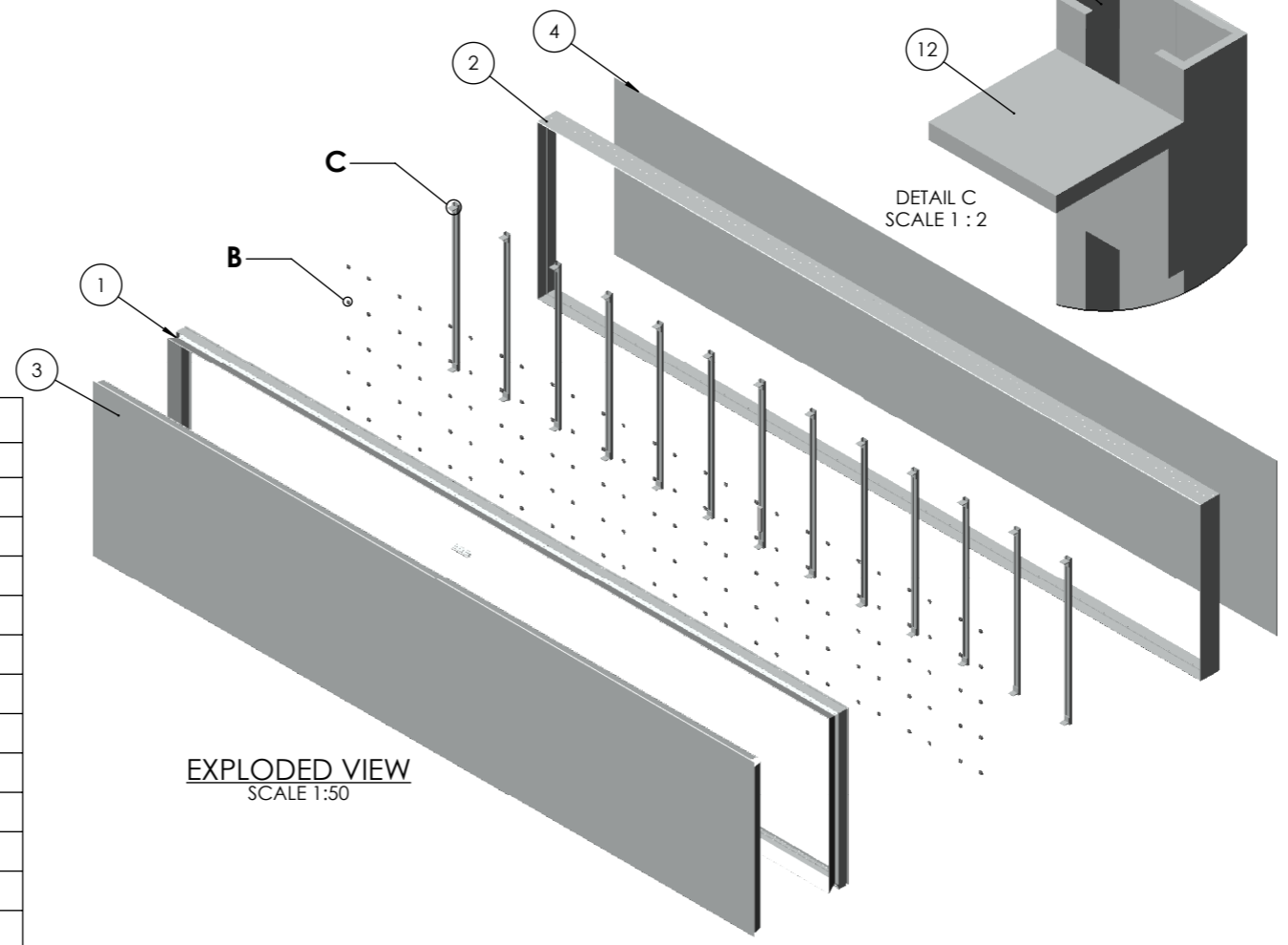
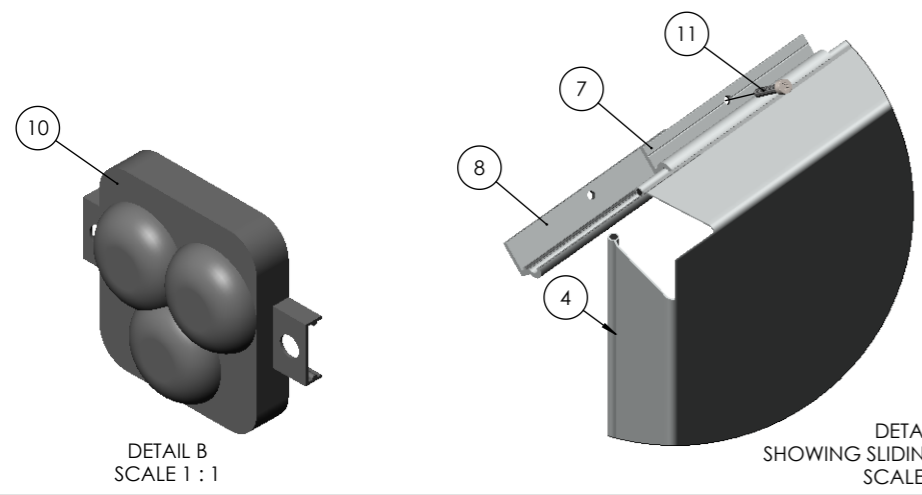
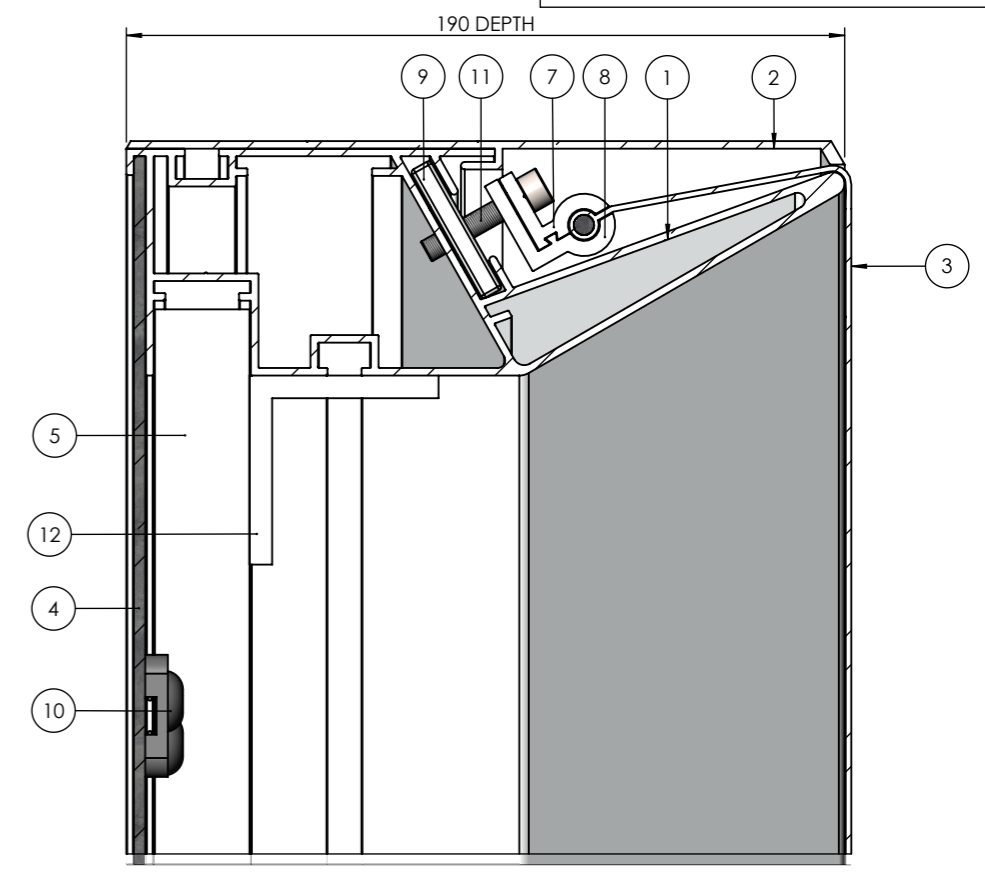
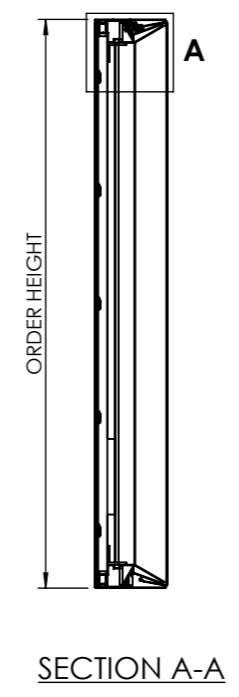
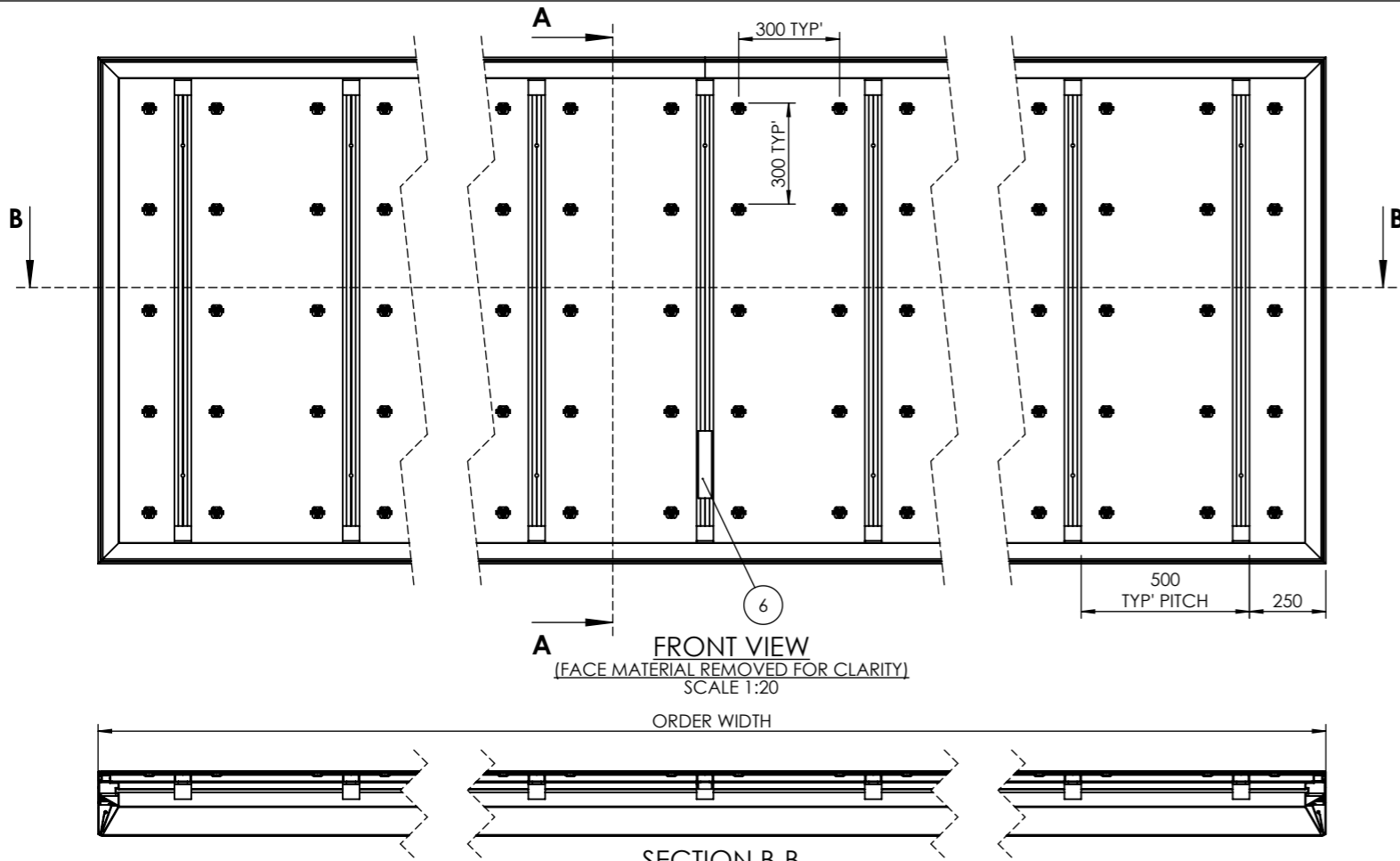


DO NOT SCALE
IF IN DOUBT ASK



BILL OF MATERIALS SPRINGFLEX 190

ITEM NO.	DRAWING No/REF	QTY	FINISH	NOTES
1	BODY SF2415M	1		
2	COVER SF1552	1		
3	FACE MATERIAL	1		C/W TENSION BAR
4	BACKPLATE	1		1-3mm THICKNESS RANGE
5	WALL BAR SF1577M	AS REQ'		500mm PITCH TYPICALLY
6	LED CONVERTER	1		
7	SPLIT CLAMP A	AS REQ'		TWO SIZES 150 & 295mm
8	SPLIT CLAMP B	AS REQ'		TWO SIZES 150 & 295mm
9	TENSION BAR	AS REQ'		
10	LED MODULE	AS REQ'		300mm GRID FORMATION
11	M6 TORX CAP SCREW	AS REQ'		
12	50x50x6 ANGLE	2 PER WALL BAR		

REV. DATE	DESCRIPTION	BY
A 01-01-19	HD SLIDE CLAMP DETAIL D ADDED	R.L

THIS DRAWING IS THE PROPERTY OF KSUK LTD AND MAY NOT BE COPIED IN WHOLE OR IN PART OR USED FOR ANY OTHER PURPOSE THAN THAT FOR WHICH IT IS SUPPLIED

GENERAL TOLERANCES UNLESS OTHERWISE STATED:
0 DECIMAL PLACES +/- 1mm
1 DECIMAL PLACE +/- 0.5mm
2 DECIMAL PLACES +/- 0.15mm
ANGULAR DIMENSIONS +/- 1/2°

KSUK[®]

T 0121 783 0779, F 0121 783 1334
KSUK, Unit 6 Valepits Road, Garrets Green Industrial Estate, Birmingham, West Midlands, B33 0TD

DRAWING TITLE: **SPRINGFLEX HD 190**

PRODUCT RANGE: **SPRINGFLEX**

PROJECT No: **IDS-236** DATE: **04-12-18**

PAPER: **A3** DRAWN: **R.L** CHKD: **-**

SCALE: **N.T.S** DWG No.: **IDS-236-005** REV: **A**