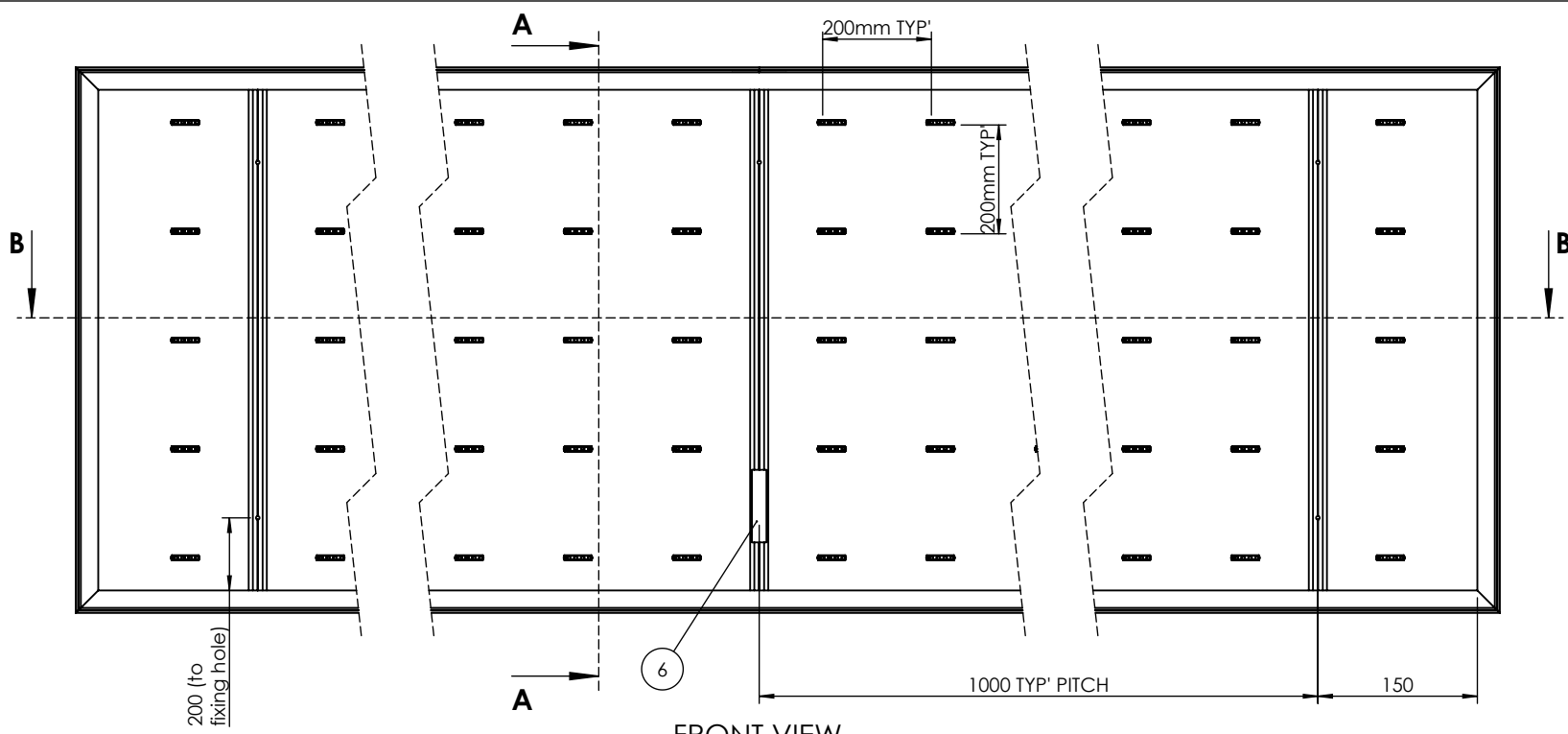
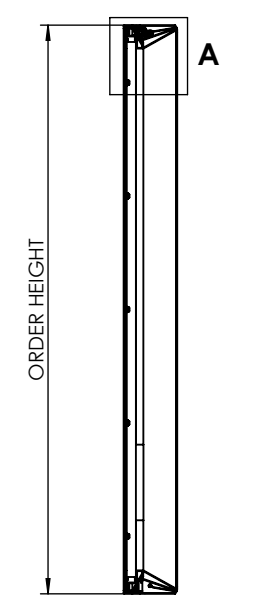


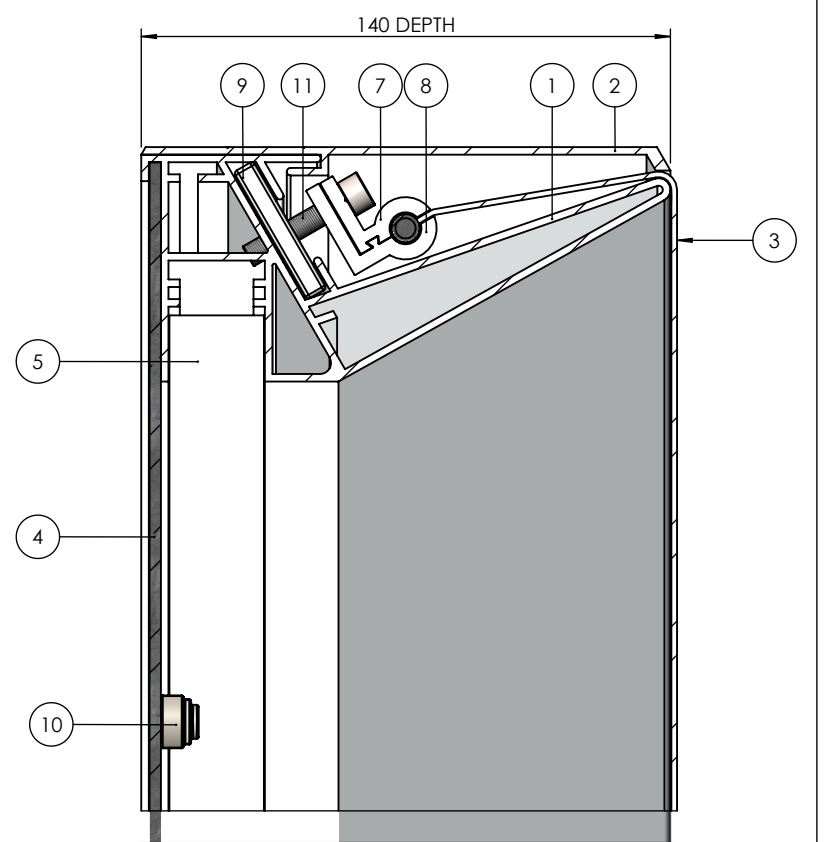
DO NOT SCALE
IF IN DOUBT ASK



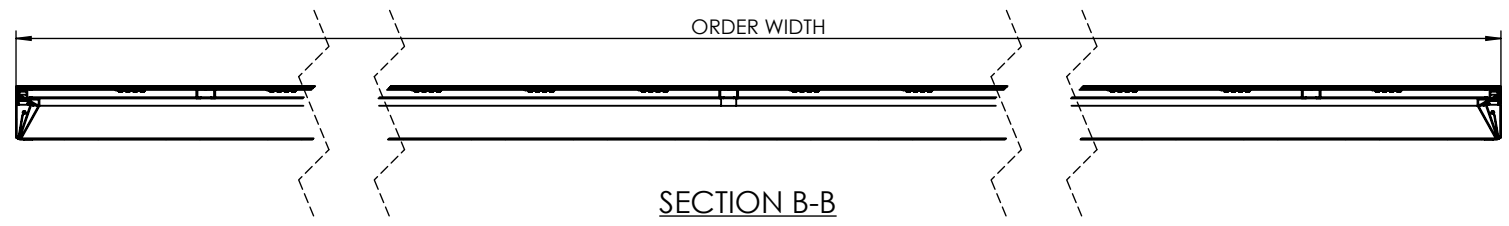
FRONT VIEW
(FACE MATERIAL REMOVED FOR CLARITY)
SCALE 1:20



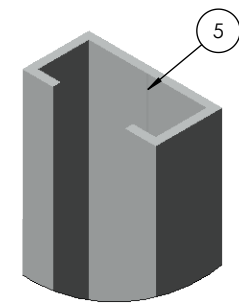
SECTION A-A



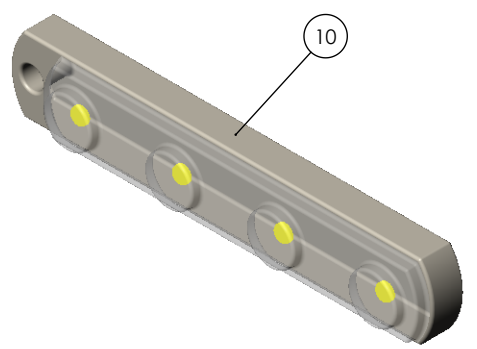
DETAIL A
SCALE 1:2



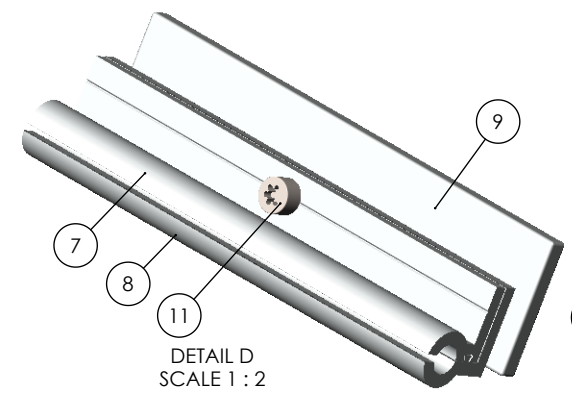
SECTION B-B



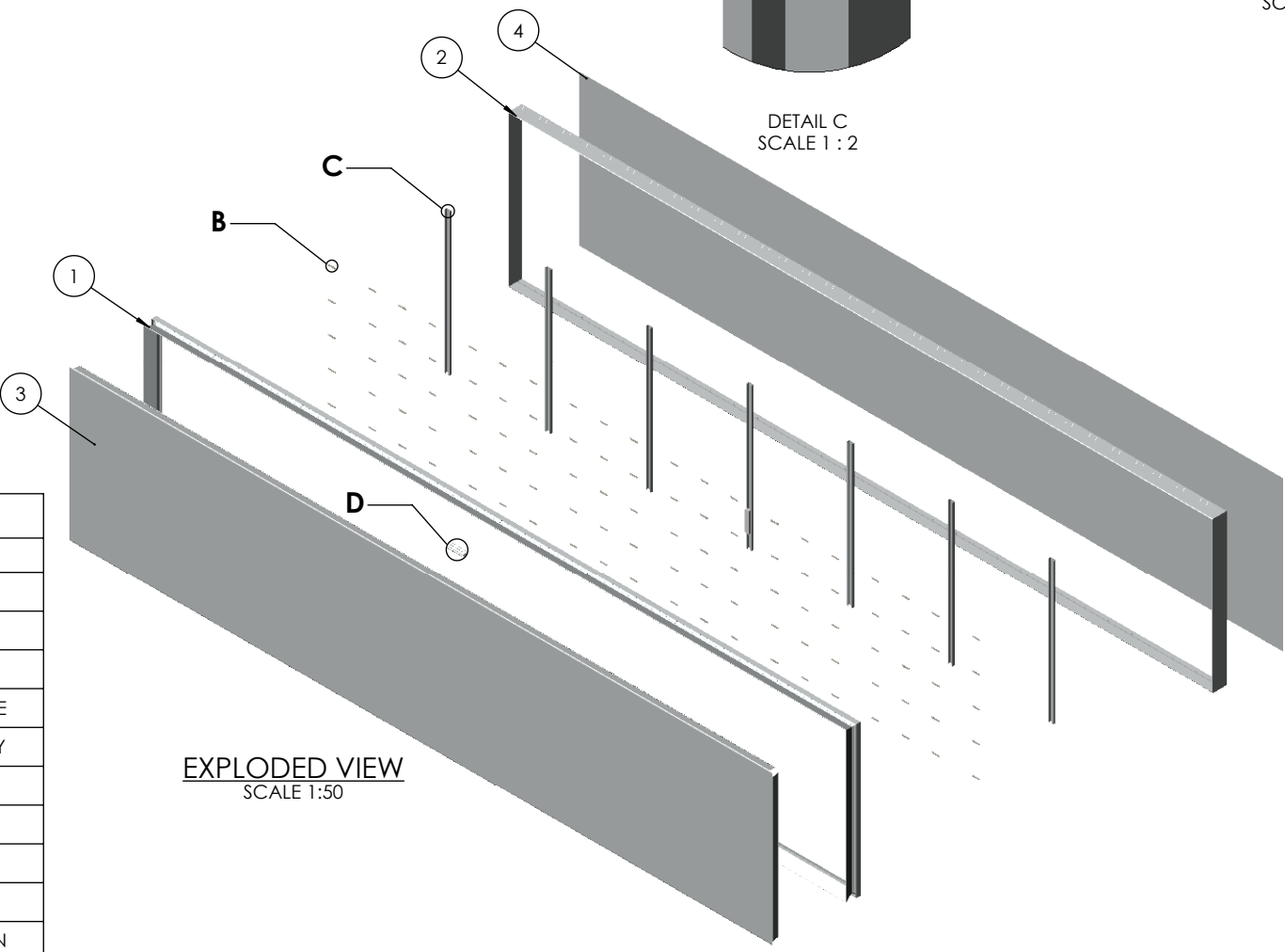
DETAIL C
SCALE 1:2



DETAIL B
SCALE 1:1



DETAIL D
SCALE 1:2



EXPLODED VIEW
SCALE 1:50

BILL OF MATERIALS SPRINGFLEX HD 140

ITEM NO.	DRAWING No/REF	QTY	FINISH	NOTES
1	BODY SF1582M	1		
2	COVER SF1552	1		
3	FACE MATERIAL	1		C/W TENSION BAR
4	BACKPLATE	1		1-3mm THICKNESS RANGE
5	WALL BAR SF1577M	AS REQ'		1000mm PITCH TYPICALLY
6	LED CONVERTER	1		
7	SPLIT CLAMP A	AS REQ'		TWO SIZES 150 & 295mm
8	SPLIT CLAMP B	AS REQ'		TWO SIZES 150 & 295mm
9	TENSION BAR	AS REQ'		
10	GE MODULE	AS REQ'		200mm GRID FORMATION
11	M6 TORX CAP SCREW	AS REQ'		

REV. DATE	DESCRIPTION	BY
A 28-11-18	GE MODULE INCLUDED	R.L
<small>THIS DRAWING IS THE PROPERTY OF KSUK LTD AND MAY NOT BE REPRODUCED OR TRANSMITTED IN ANY FORM OR BY ANY MEANS, ELECTRONIC OR MECHANICAL, WITHOUT THE EXPRESS WRITTEN CONSENT OF THE COMPANY. ANY UNAUTHORIZED USE OF THIS DRAWING FOR ANY OTHER PURPOSE THAN THAT FOR WHICH IT IS SUPPLIED IS PROHIBITED.</small>		
<small>GENERAL TOLERANCES UNLESS OTHERWISE STATED: 0 DECIMAL PLACES +/- 1mm 1 DECIMAL PLACE +/- 0.5mm 2 DECIMAL PLACES +/- 0.15mm ANGULAR DIMENSIONS +/- 1/2°</small>		



T 0121 783 0779, F 0121 783 1334
KSUK, Unit 6 Valepits Road, Garrets Green Industrial Estate, Birmingham, West Midlands, B33 0TD

DRAWING TITLE: SPRINGFLEX HD 140		
PRODUCT RANGE: SPRINGFLEX		
PROJECT No: IDS-236	DATE: 23-11-18	
PAPER: A3	DRAWN: R.L	CHKD: -
SCALE: N.T.S	DWG No.: IDS-236-004	REV: A